



INTERNAL DEALER COMMUNICATION – NOT FOR REPUBLICATION

INTERNAL DEALER COMMUNICATION – NOT FOR REPUBLICATION

Date:	30/09/2024	Reference Number:	AS-24-113	Category:	AFTERSALES
Attention of:	Dealer Principal, Parts Manager, Service Manager			Priority:	AMBER
Title:	Update SIPS for Ethernet				

Dear Dealer Colleague,

With advancements in technology and the constant strive to stay at the forefront, it is necessary to update not only software but also the medium by which software communications are handled.

MG are pleased to announce that the flashing of some modules that require large file updates will now be carried out via hardwired ethernet connection and not the existing high speed CAN system

This means that communication and reprogramming of the specific modules will be faster and remove the requirement for flashing from a USB.

The modules that will be flashed using this new system are currently the FICM, T Box and Instrument Pack.

Only the MG HS 24MY and MG Cyberster are effected in the current range, however going forwards all new models will flash by this method.

In order to support this, SAIC have released an update to the SIPS system used by MG.

Your equipment will need to meet certain criteria and be updated to the newest version of SIPS.

Operating platform – Windows 10 or 11

Minimum Laptop Disc Space – 475GB

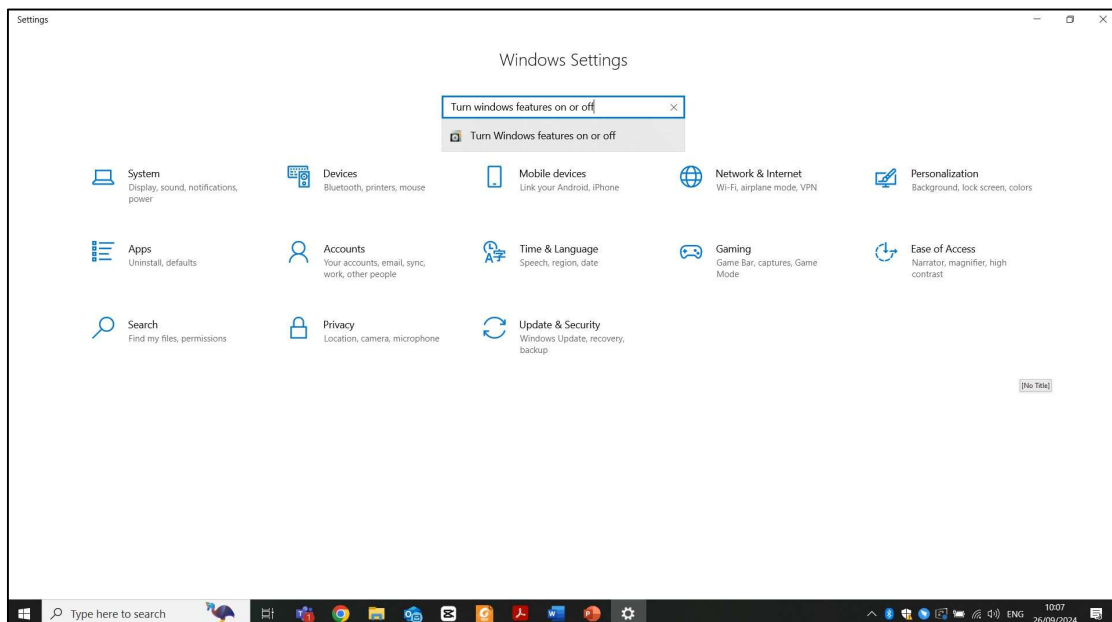
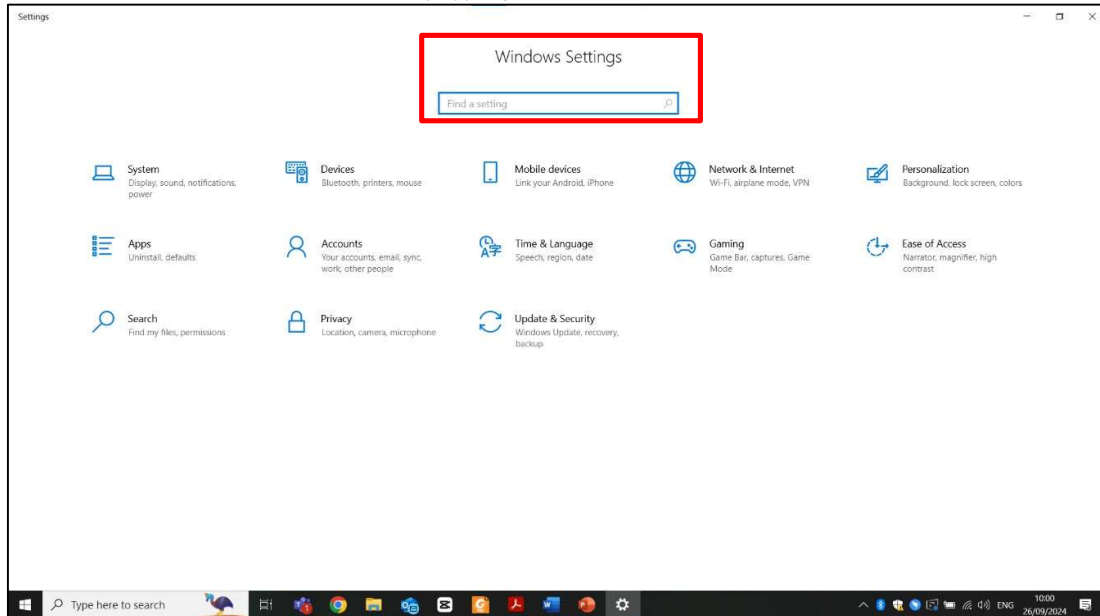
Communication Device – VDI III only (VDI1 and 2 will not work) Ethernet connection cable

Please follow the installation guide attached to this communication.

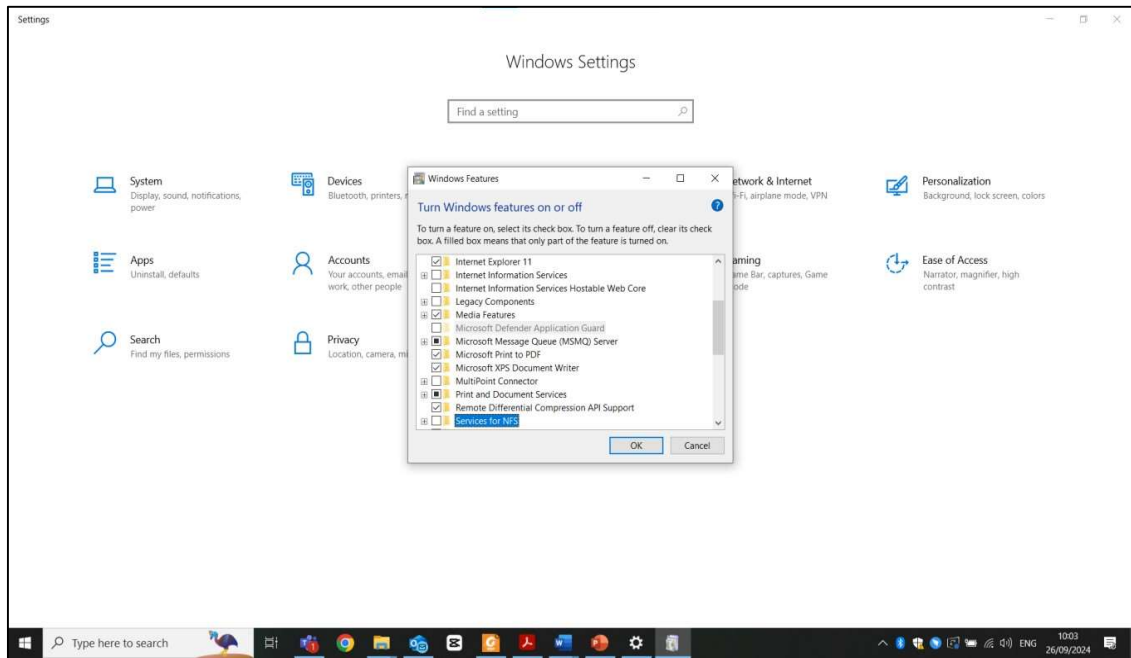
Installation Guide:

Step 1: Navigate from the settings page to 'Turn windows features on or off' and activate the Microsoft Message

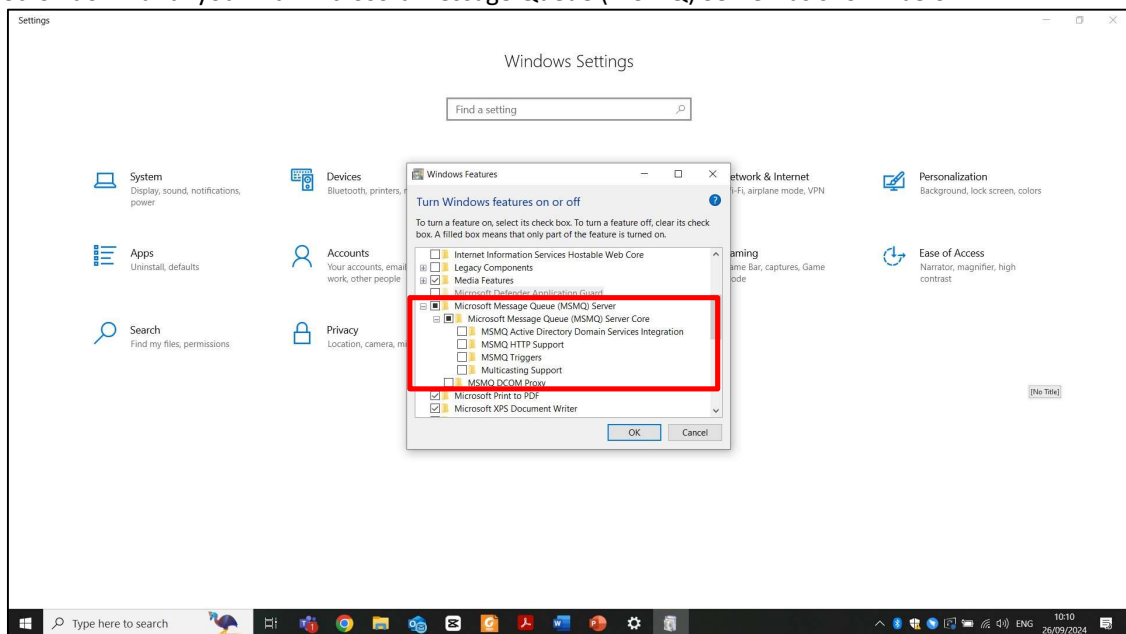
Queue (MSMQ) server core. Do this by typing in the search bar 'Turn Windows features on or off'



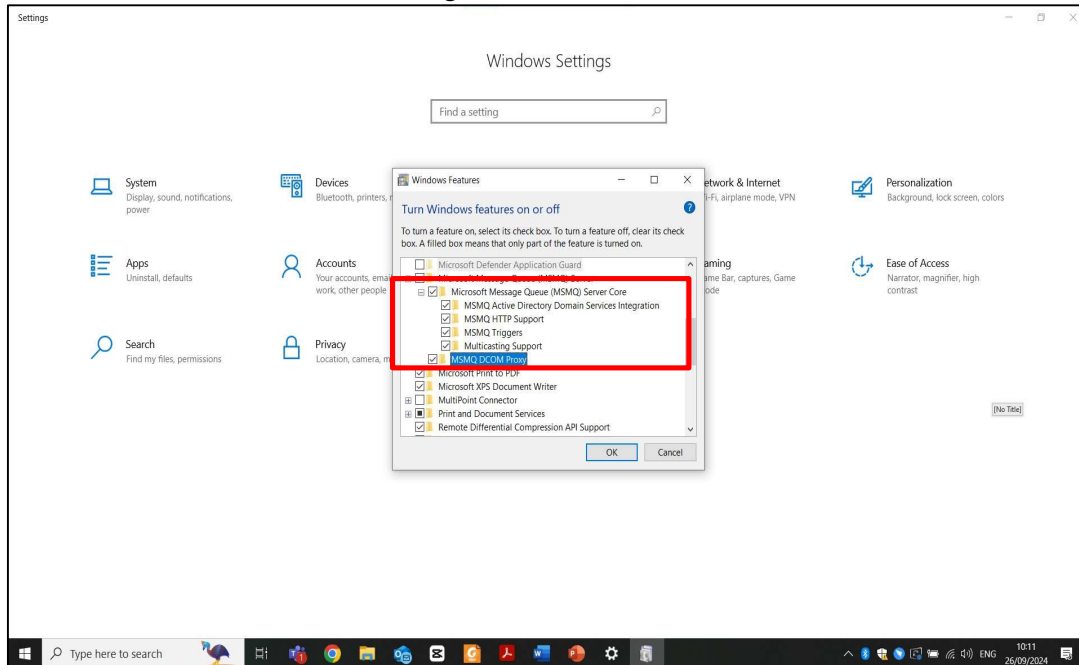
Pressing enter will display the following:



Scroll down until you find 'Microsoft Message Queue (MSMQ) Server' as shown below

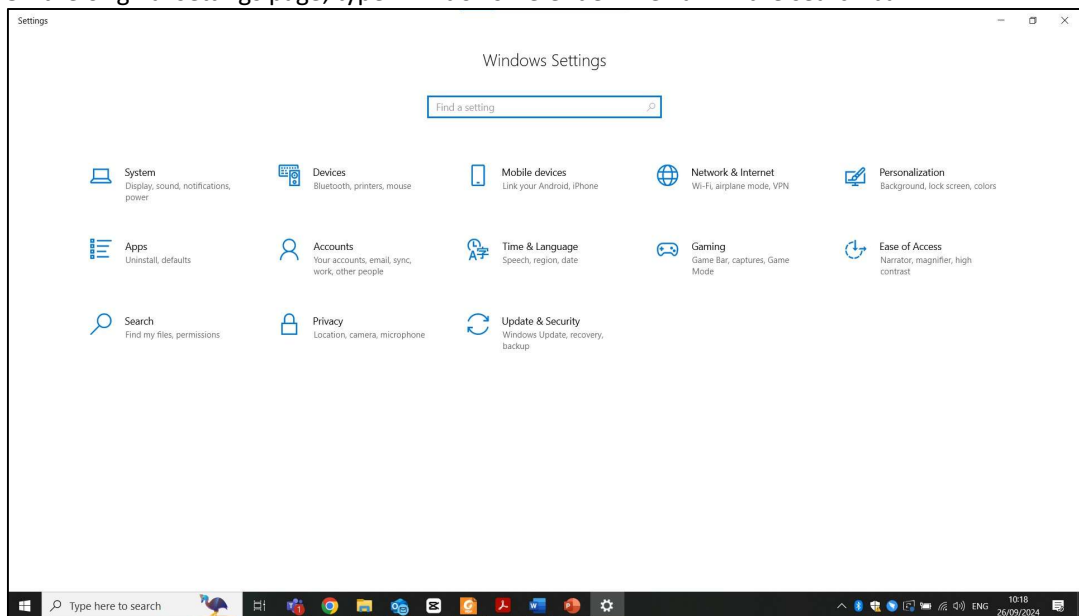


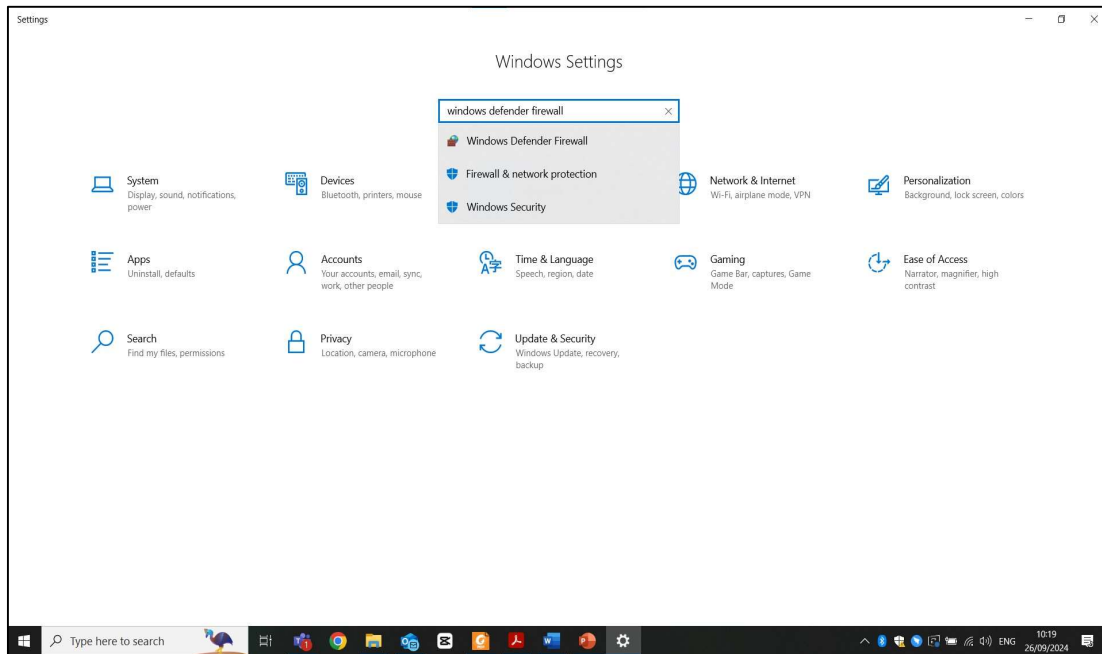
Tick all the boxes as indicated in the diagram.



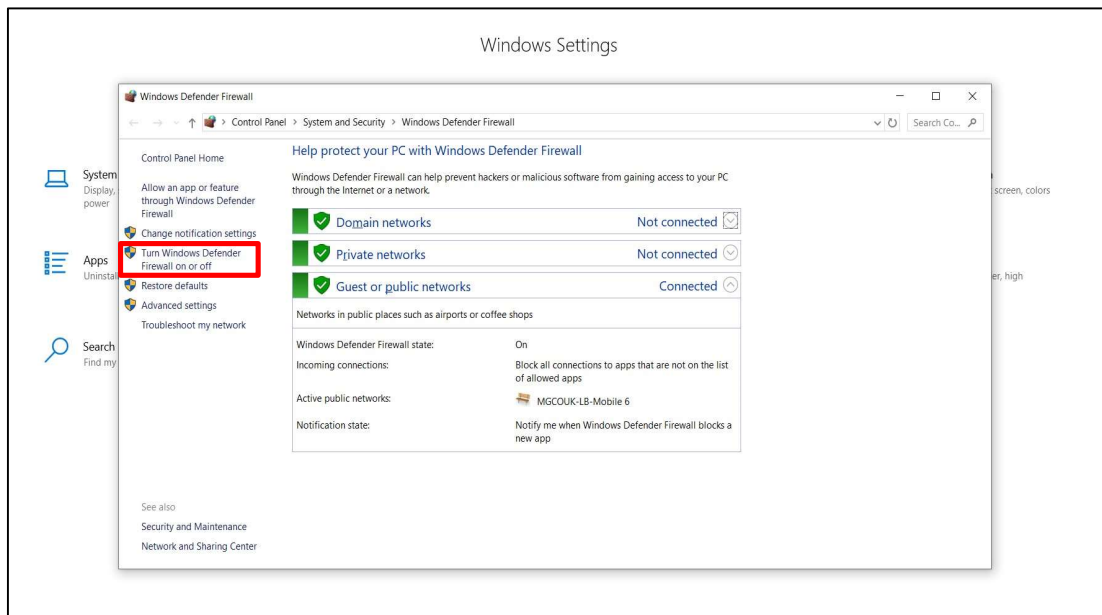
Step 2: Turn Windows Defender Firewall OFF

On the original settings page, type 'Windows Defender Firewall' in the search bar

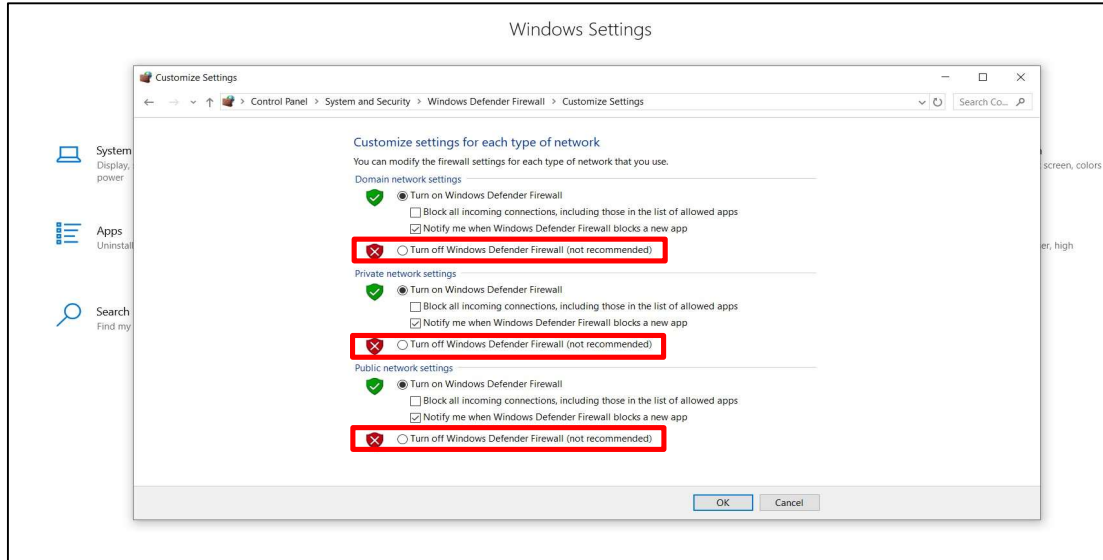




Once entered, the following page will be displayed; follow this by clicking on 'Turn windows defender firewall on or off'



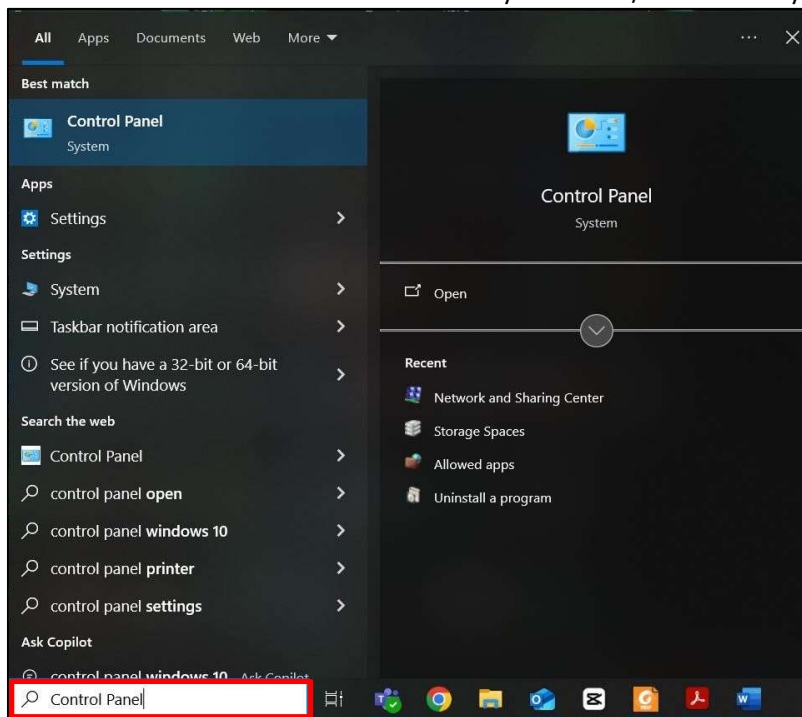
Check the boxes to turn off all the windows defender firewall network settings



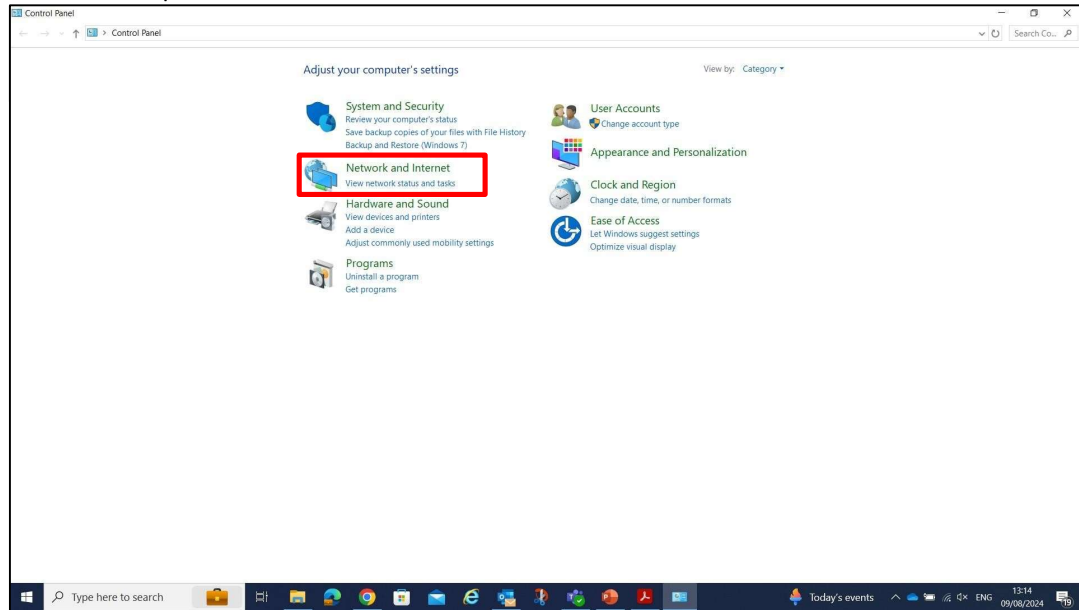
Step 3: Set the Ethernet and VCI Communication

(Please note the ethernet cable will need to be connected to the laptop at this stage)

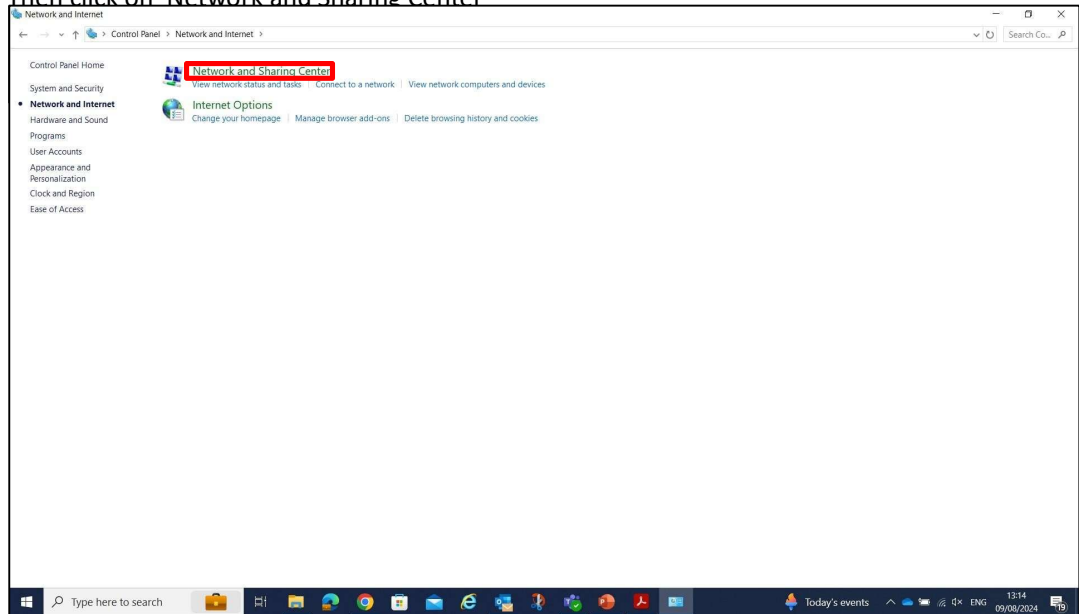
To begin with, we will need to access the control panel. The easiest way to do so is by clicking the search bar in the bottom left hand corner of your screen/taskbar and typing 'Control panel'.



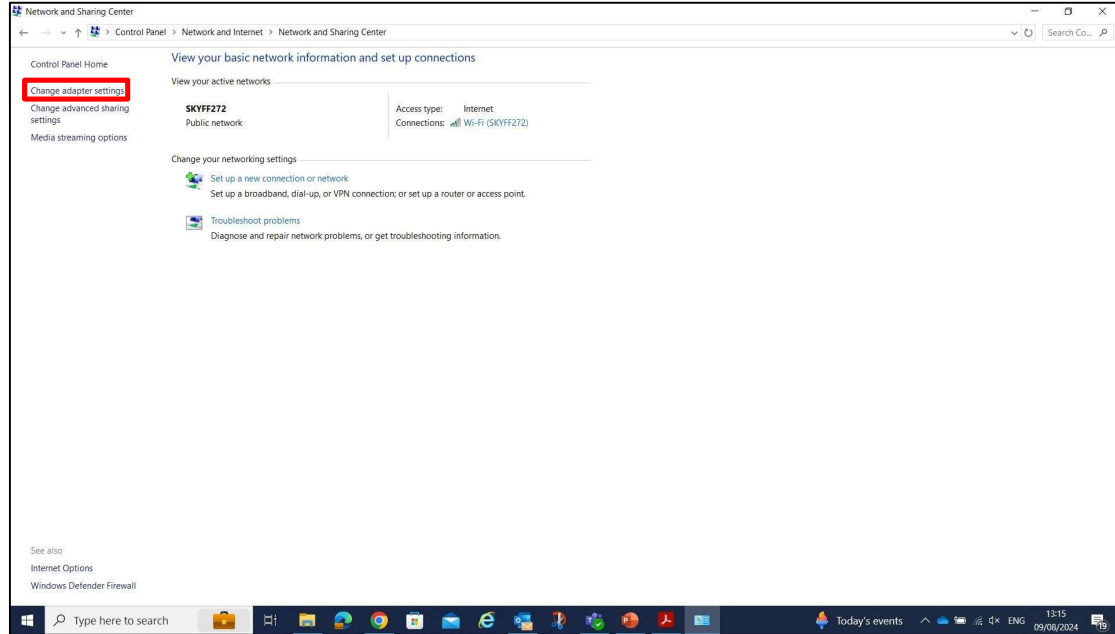
In the control panel menu, click 'Network and Internet'



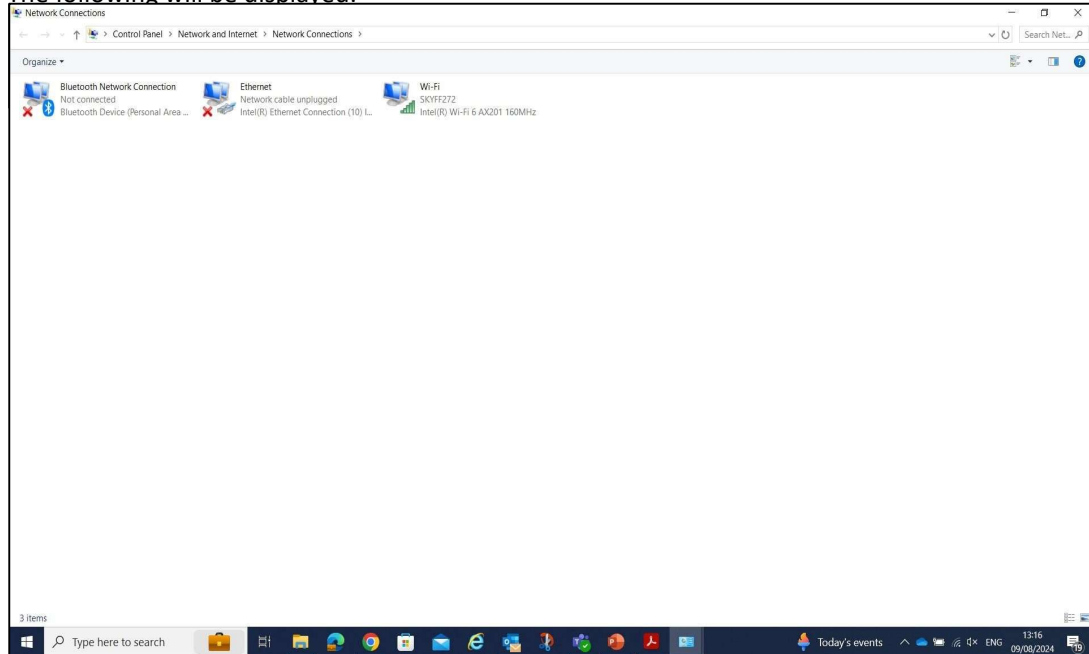
Then click on 'Network and Sharing Center'



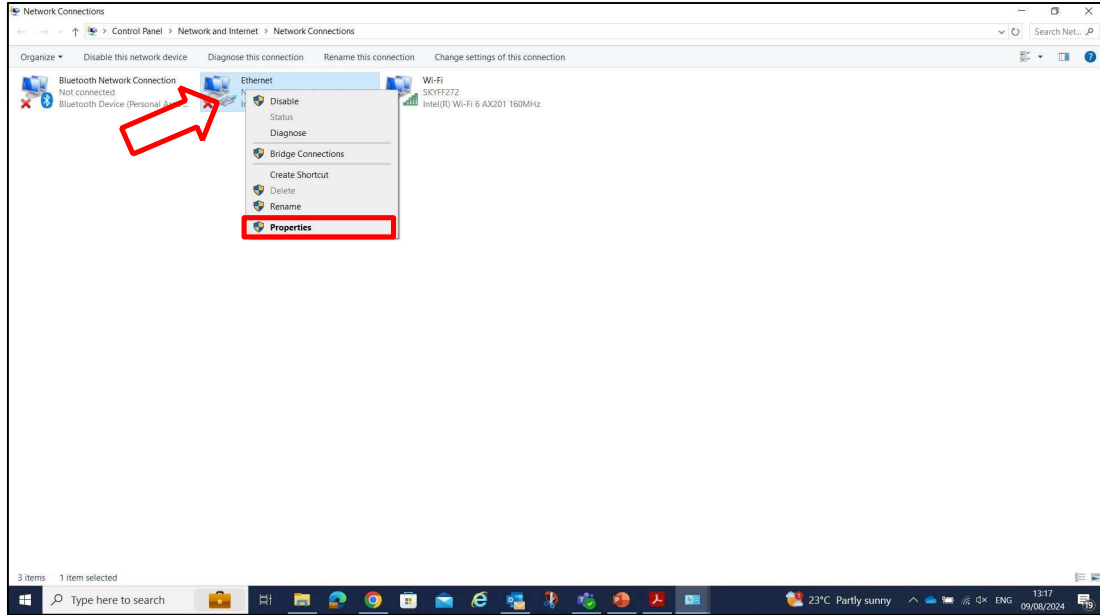
On the next screen, click on 'Change adapter settings'



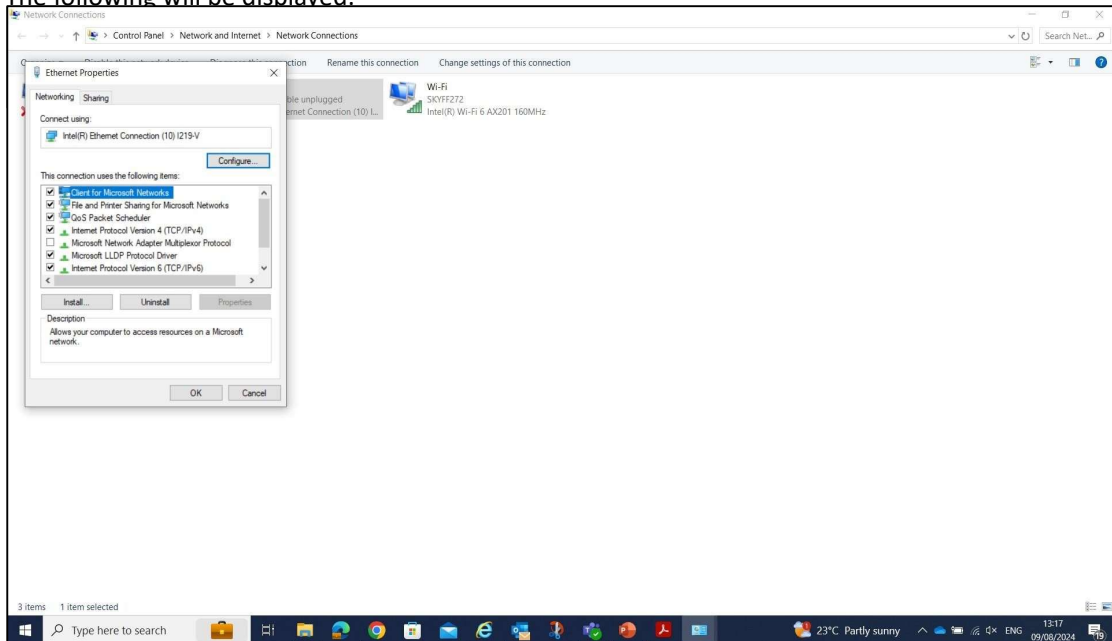
The following will be displayed:



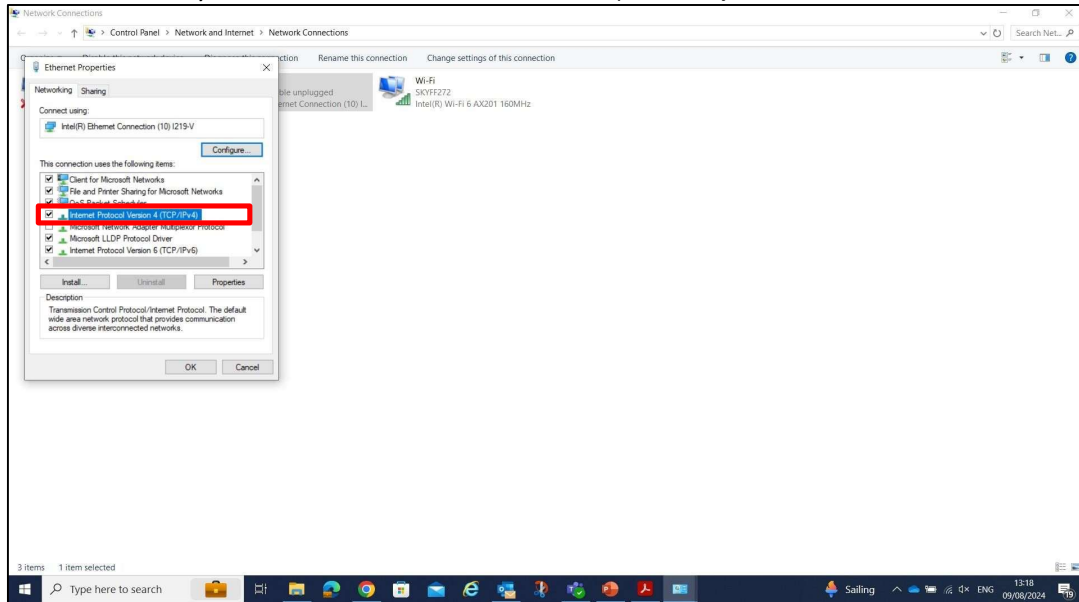
Right click on 'Ethernet' and then 'Properties'



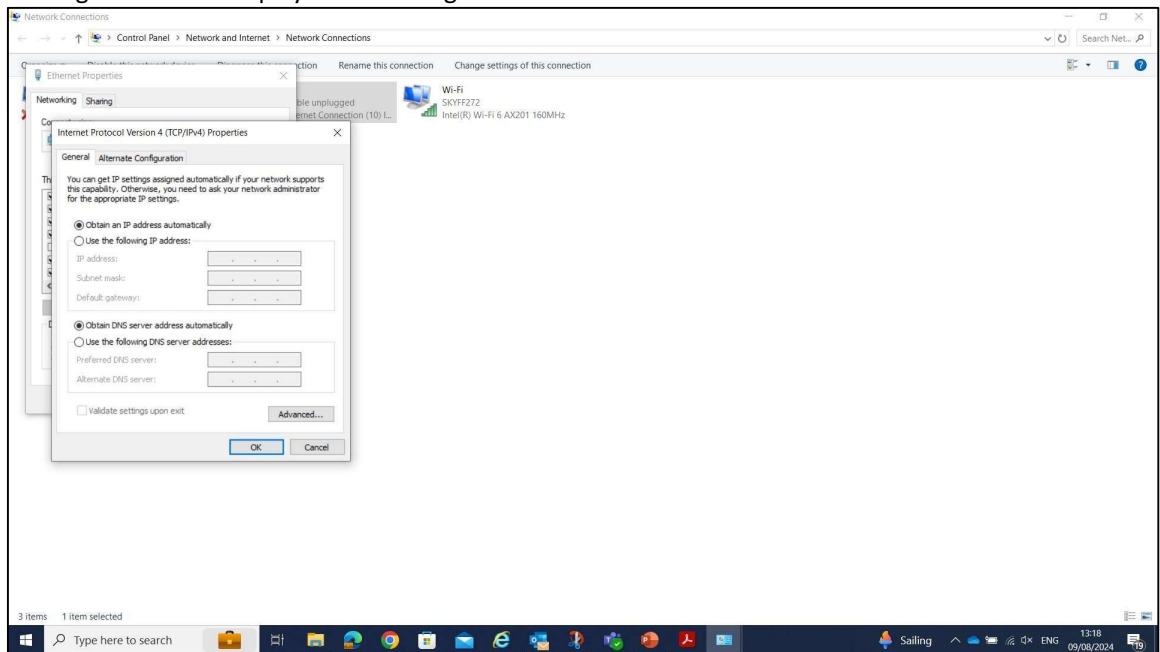
The following will be displayed:



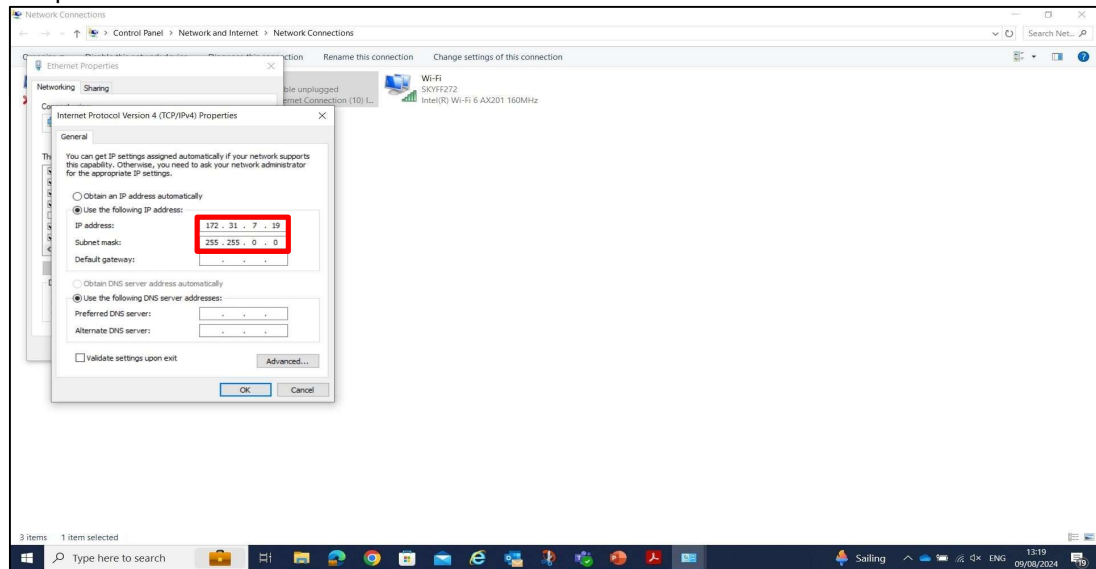
Scroll down until you find 'Internet Protocol Version 4' (TCP/IPv4)



Clicking on that will display the following:

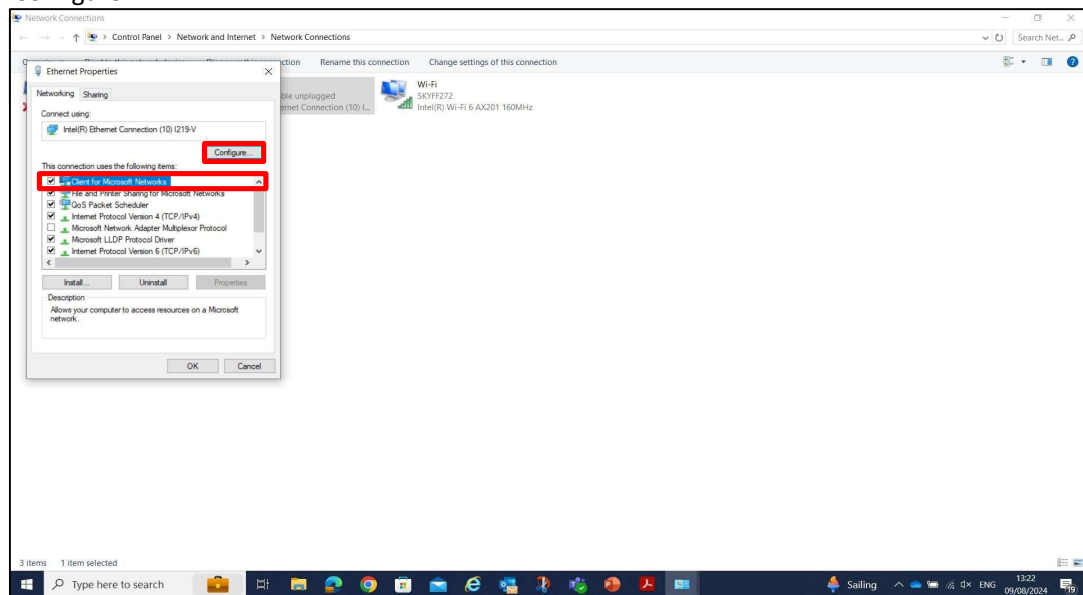


In the IP address box enter: '172.31.7.19' and in Subnet Mask: '255.255.0.0' and click 'OK' once complete

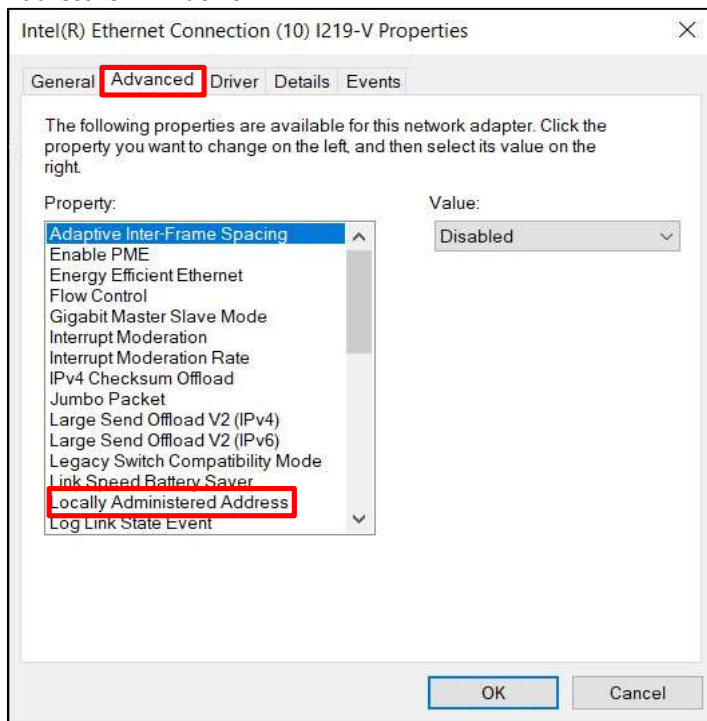


Step 4: Set the value of the locally administered address

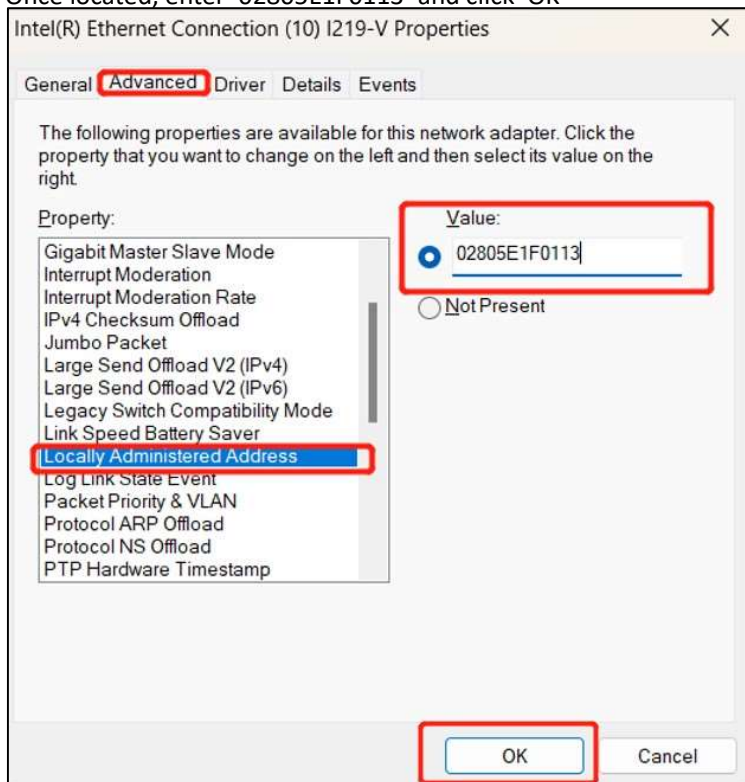
After clicking 'OK' on the previous screen, highlight 'client for Microsoft Networks' and then click 'Configure'



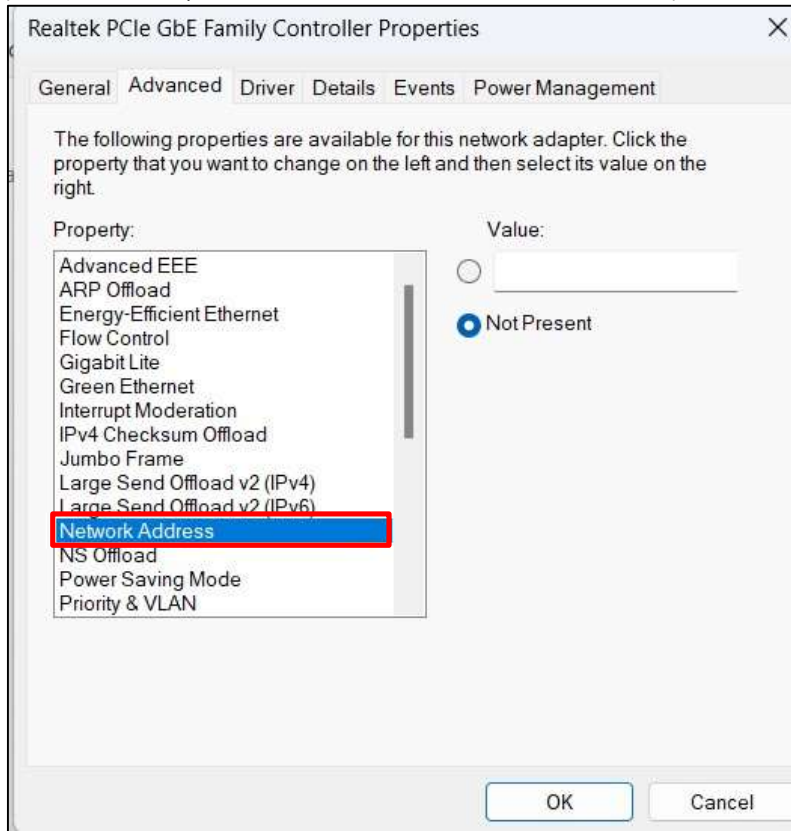
Click on the 'advanced tab' and locate 'Locally Administered Address' this is called 'Network Address' on windows 11



Once located, enter '02805E1F0113' and click 'OK'

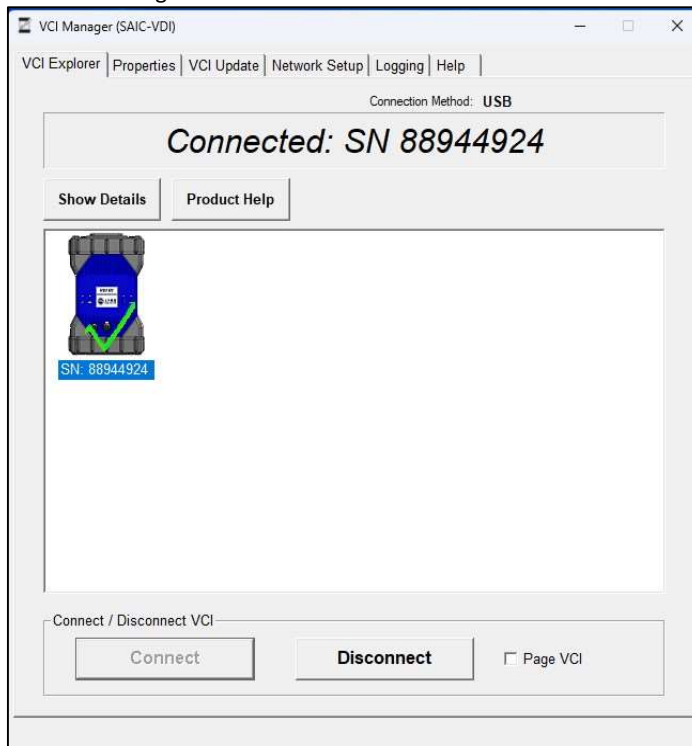


(Below is an example of when windows 11 uses 'network address')



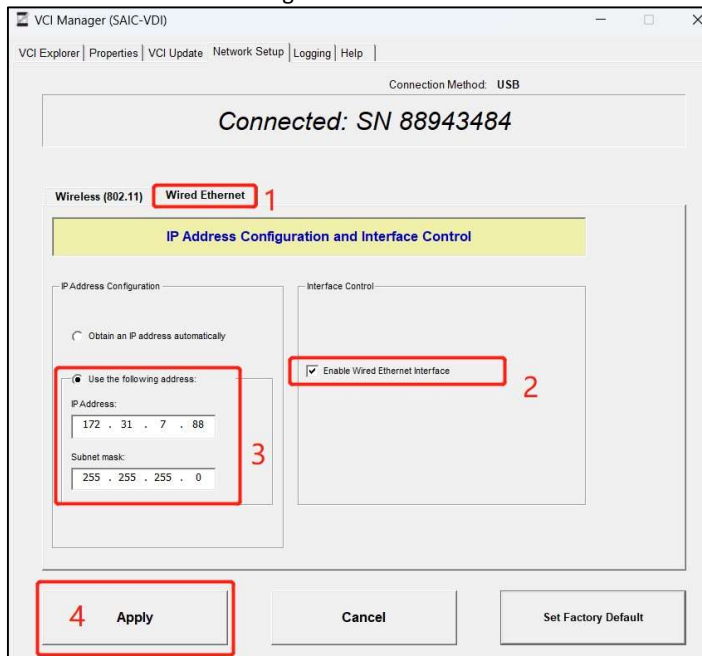
Step 5: Adjust the VCI Ethernet settings:

Load VCI Manager and connect to the VDI Unit.



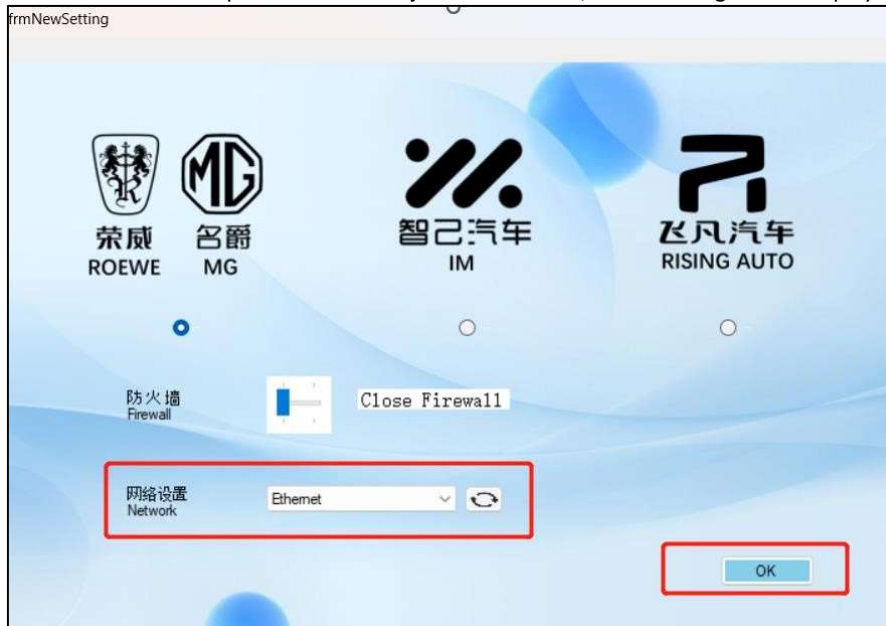
Click on: Network Setup followed by;

1 – Wired Ethernet, 2 – Enable Wired Ethernet Interface, 3 – Enter the following in the IP Address: '172 . 31 . 7 . 88' and the following in subnet mask: '255 . 255 . 255 . 0' Then click 'Apply'



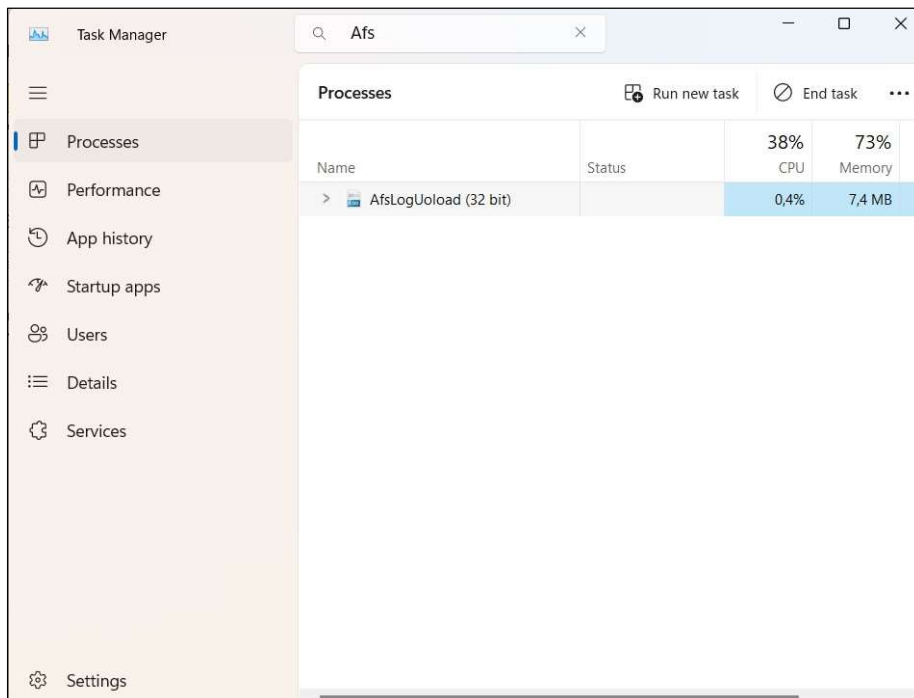
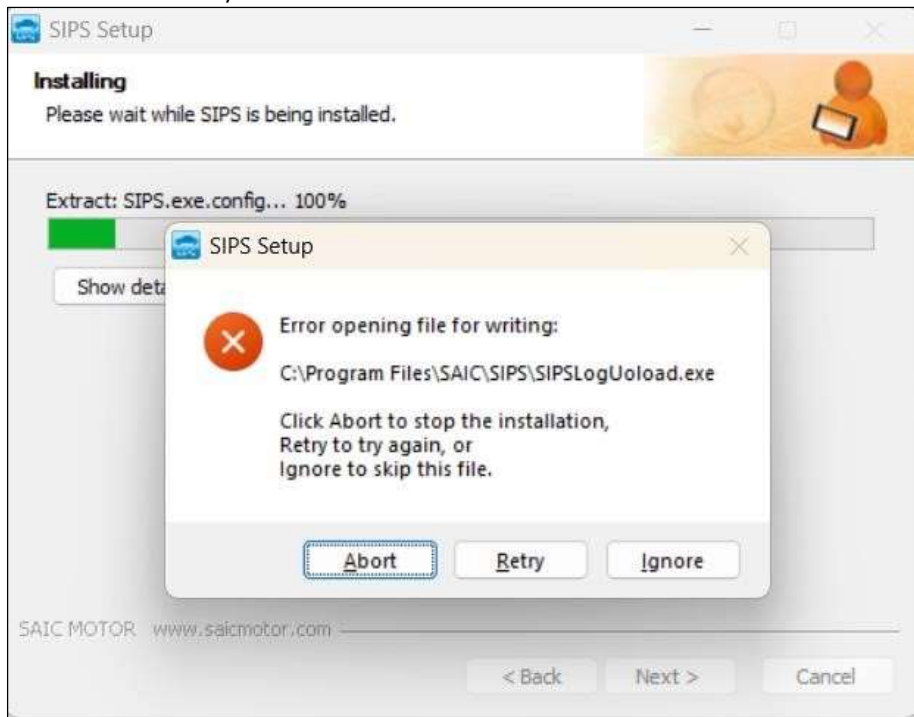
Step 6: Install and Setup New SIPS:

- Uninstall the existing SIPS
- Download New SIPS from the following wetransfer link: <https://we.tl/t-RHvRmtrYNg>
- Once installed, insert the ethernet cable into the laptop port
- Click on the SIPS 'setup' icon which was just downloaded, the following will be displayed:



- Confirm Roewe/MG is selected
- Select 'Ethernet' in the network box and click 'OK'

- Should the install display the following problem as shown below; use the TASK manager to end the task and retry.

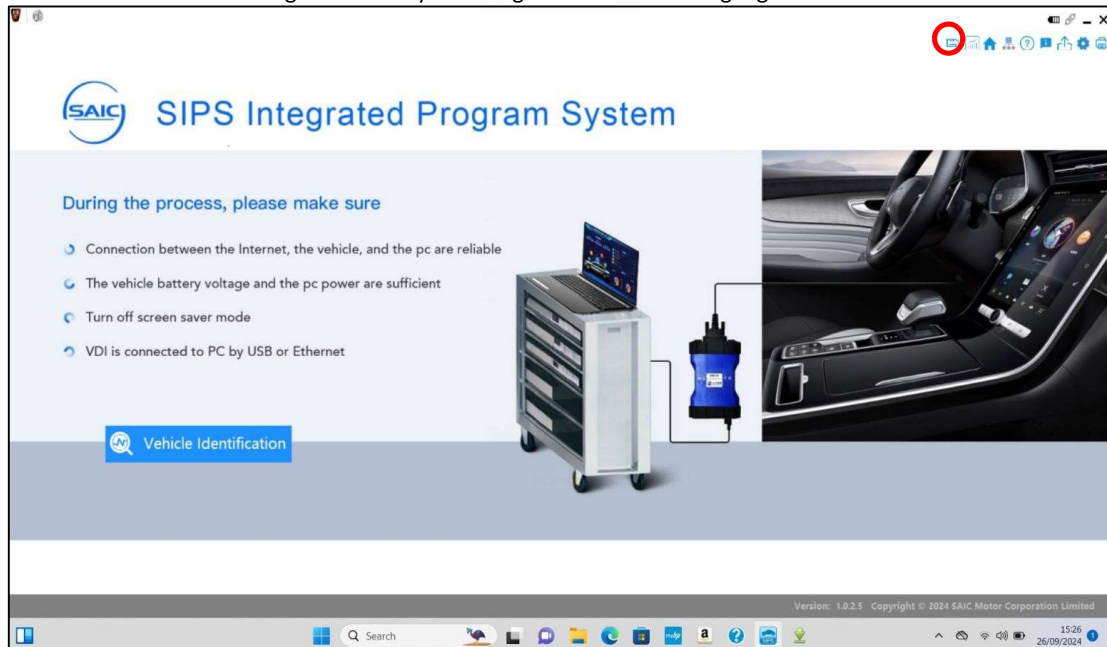


Step 7: Check the settings of the 'Large Size Tool'

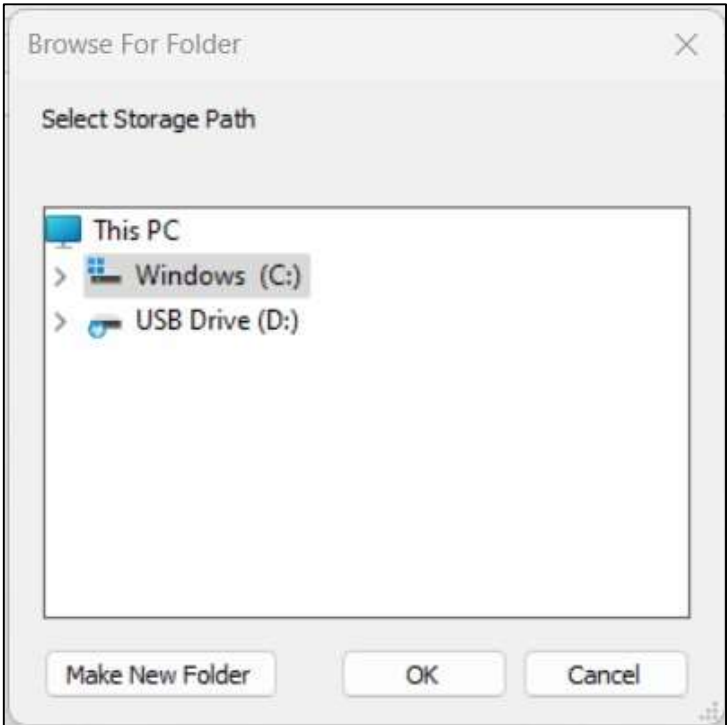
Once SIPS has completely installed, run SIPS in administrator mode. You will then get the following pop up after SIPS boots up:



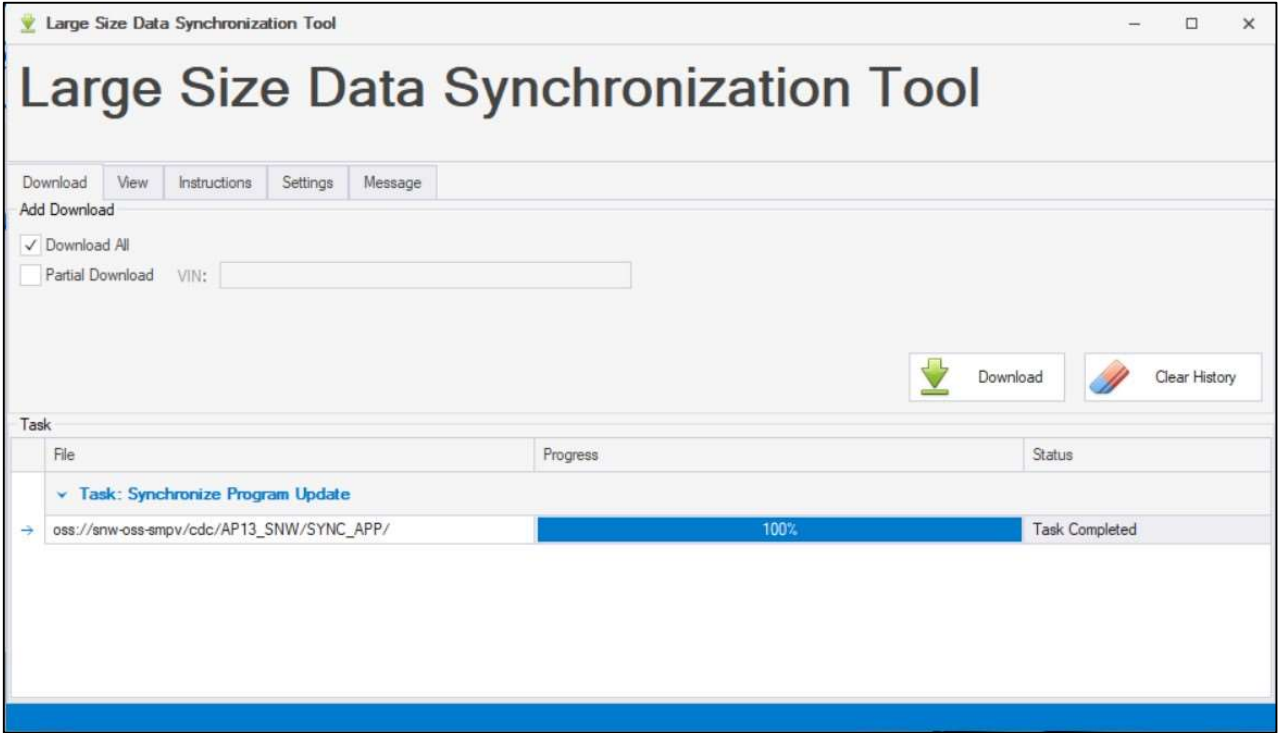
You can also activate the large size tool by selecting the 'disc' icon as highlighted below:



Click on 'Change storage path' and create a folder called 'Large File Size':



Once done, the following will be displayed, please wait for the blue bar at the bottom to reach the end.



The setup is now complete and you will be ready to use SIPS.